

# KENWOOD

Listen to the Future



## KGS-3

FleetSync® AVL & Dispatch  
Messaging Software

FleetSync®  
by KENWOOD

### GENERAL

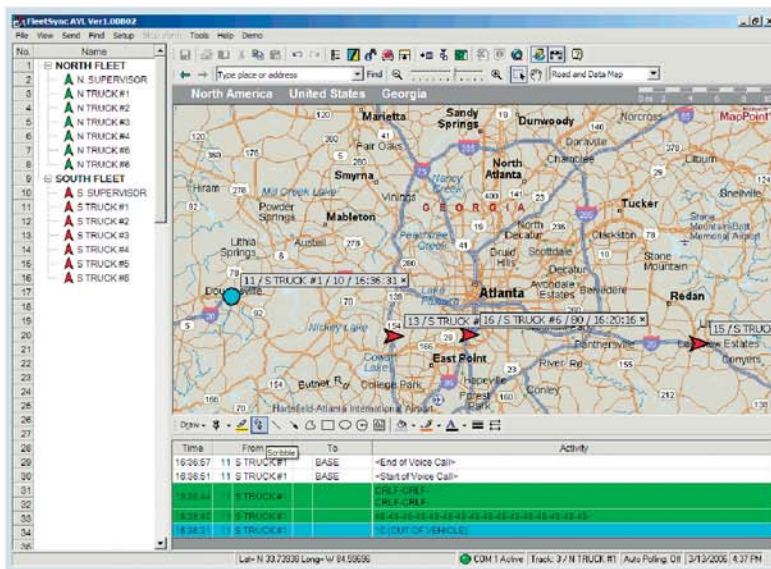
- FleetSync® GPS AVL Data Compatible
- 100 Vehicle Tracking Capacity<sup>1</sup>
- Microsoft® MapPoint® 2004/2006 Mapping (purchase separately)<sup>2</sup>

### WINDOWS® OS GRAPHICAL INTERFACE

- 20 Display Icons - Color Coded
- 30 Status Icons & Emergency Icon
- Screen View & Navigation Functions
- Quick Access & Shortcut Keys
- Vehicle Station Tree View List
- Vehicle Icon Tags (name, unit, status, speed, time)
- Activity History Grid with Color-Coded Call Indications
- Emergency Screen Alerts
- All or Selected Vehicles can be Viewed or Tracked

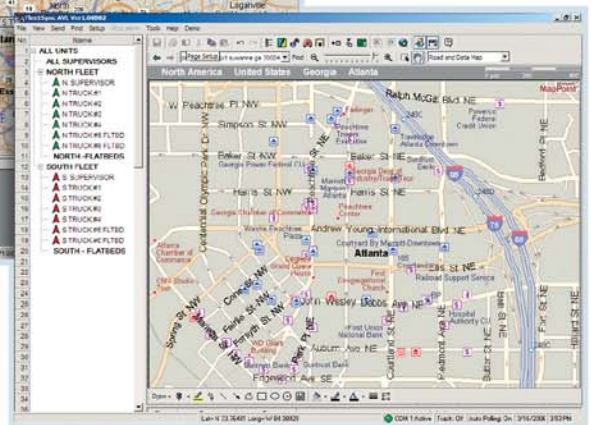
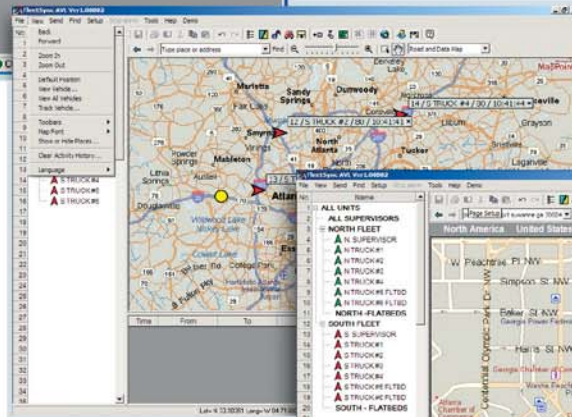
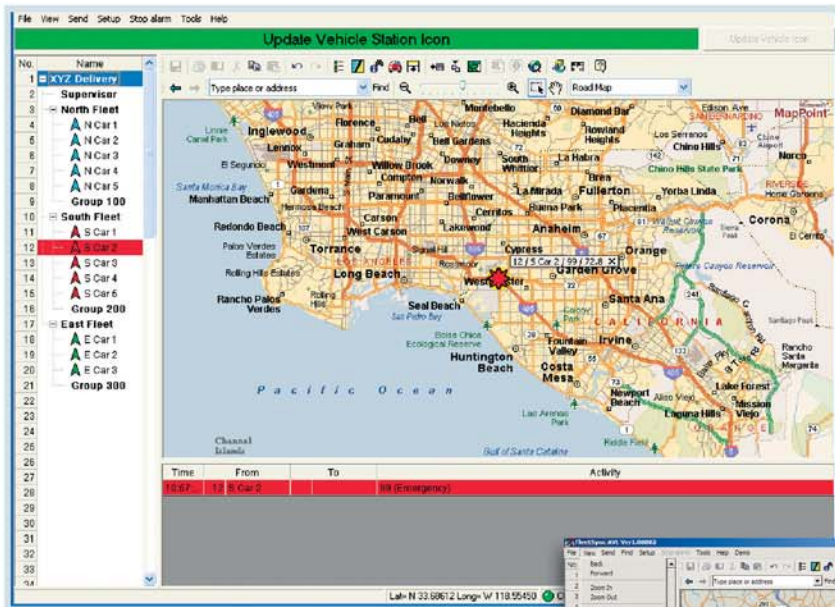
### ADMINISTRATIVE FEATURES

- Administrator Setup Password Protected
- Auto Polling (base to mobiles)
- Auto Reporting per Mobile Programming
- Historical Logging & File Playback (Position, Voice, Messages, Status)
- Emergency & Man-Down Log File Review
- WAV File Import for Emergency and New Messages
- Default Position



### FleetSync® DISPATCH SIGNALING & MESSAGING

- Call Activity Window
- Call Types: Individual, Fleet, Group, Broadcast, Supervisory
- 70 Custom Status Messages (25 alphanumeric ea.)
- Emergency
- Stun / Remote Kill
- Horn Alert
- Free Form 48-Character Alphanumeric Text Messages
- 20 Pre-defined 48-Character Alphanumeric Text Messages



## COMPATIBILITY

- 180-Series Mobile Configured as Base Station
- Mobile Targets: 180 / 150 / 160 / 80-Series mobiles with NMEA GPS unit installed for FleetSync® AVL
- Portable Targets: KMC-38GPS Speaker Microphone compatible models<sup>3</sup>
- Conventional & LTR® operation only

## MINIMUM HARDWARE/SOFTWARE REQUIREMENTS

- Microsoft® MapPoint®2004 or 2006 Software (purchase separately)
- 180-Series Mobile Base Station (for computer running FleetSync® AVL application)<sup>4</sup>
- 180-Series Mobile Serial Interface Cable (purchase separately)
- Base Computer: Pentium III 1GHz, 256MB, 20MB HDD, CD ROM, Serial port, XGA (1024x768); Microsoft® Windows® 2000 Professional (SP4 or later ); XP Professional (SP1a or later)

### Footnotes:

<sup>1</sup> 100 Vehicle Tracking: Practical fleet size may vary depending on system type, system loading, vehicle poll/report rates, mixed voiceldata or dedicated data channel usage.

<sup>2</sup> Microsoft® MapPoint®2004/2006 maps only; custom maps cannot be imported. Microsoft® & MapPoint® are registered trademarks of Microsoft Corporation U.S.A.

<sup>3</sup> Refer to KMC-38GPS user manuals for compatible models.

<sup>4</sup> Supports single base station operation only. KGS-3 does not support single or multi-operator positions via IP-networks.

Kenwood follows a policy of continuous advancement in development. For this reason specifications may be changed without notice.  
 FleetSync® is a registered trademark of Kenwood Corporation.  
 LTR® is a registered trademark of Transcript International.

# KENWOOD

Kenwood U.S.A. Corporation  
 Communications Sector Headquarters  
 3975 Johns Creek Court, Suite 300, Suwanee, GA 30024-1265  
 Order Administration/Distribution  
 P.O. BOX 22745, 2201 East Dominguez St., Long Beach, CA 90801-5745

Kenwood Electronics Canada Inc.  
 Canadian Headquarters and Distribution  
 6070 Kestrel Road, Mississauga, Ontario, Canada L5T 1S8

